

BT 3063



Features

- C** 15 t @ 5 ft capacity at rated distance from center of rotation
- C** 63 ft maximum boom length
- C** 73 ft maximum sheave height
- C** 24/40 ft optional jib
- C** 113 ft maximum sheave height with 40 ft jib
- C** Electronic rated capacity indicator
- C** Quick reeving boom head

WORKS FOR YOU.[™]

DIMENSIONS

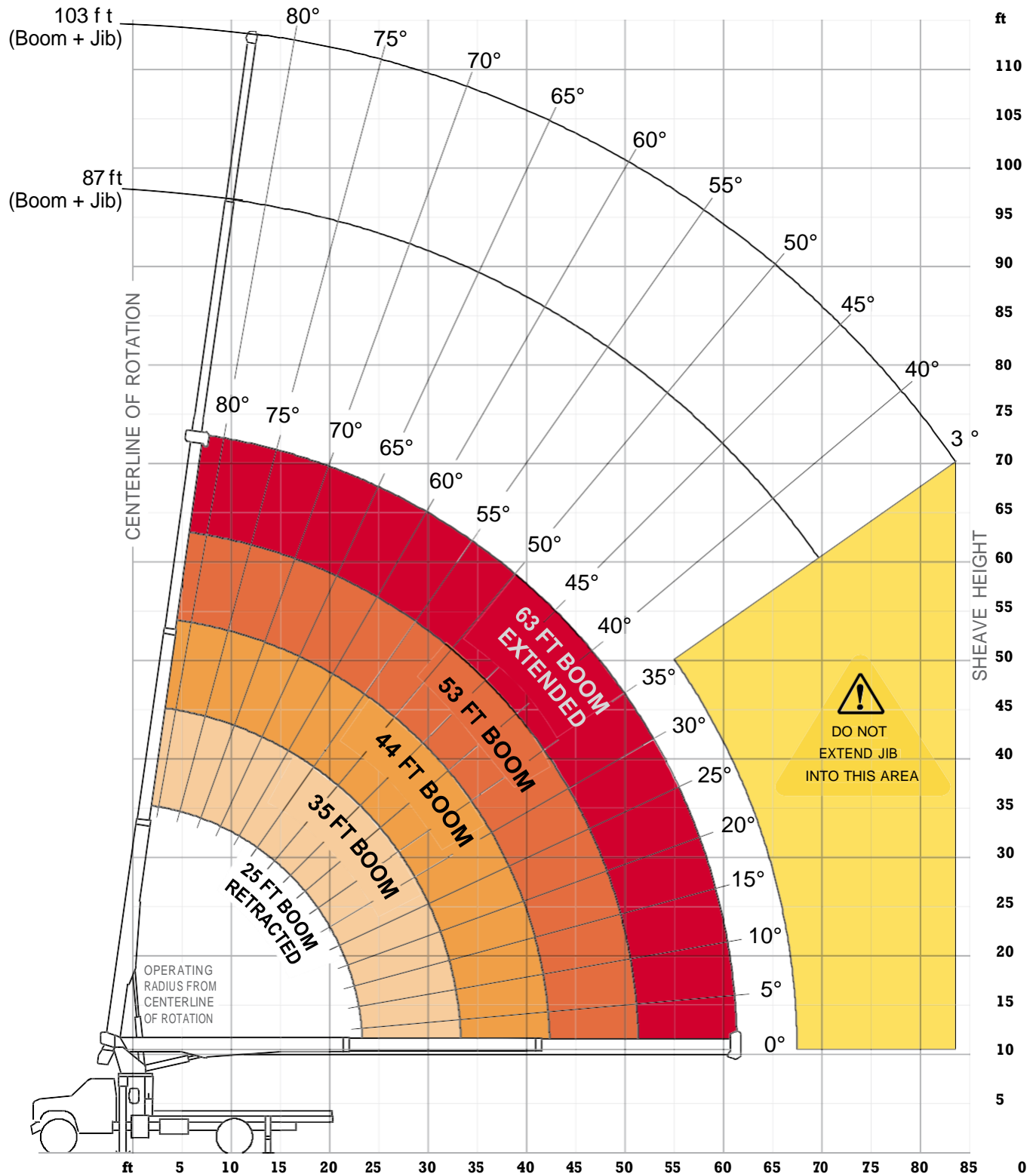
Crane Dimensions

BT 3063

RANGE DIAGRAM

BT 3063

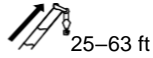
Outriggers Fully Extended (100%)





BOOM LOAD CHARTS

BT 3063

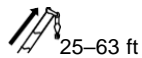
Outriggers Fully Extended (100%)





Standard ASME B30.5

 ft	Boom Length					 ft
	25 lb	35 lb	44 lb	53 lb	63 lb	
5	30,000					5
8	20,150	15,800	15,625			8
10	17,050	14,750	14,300	12,600		10
12	14,650	12,650	12,200	11,875	9,500	12
15	12,125	10,475	10,050	9,700	8,200	15
20	8,900	8,050	7,725	7,400	6,800	20
25		6,400	6,075	5,975	5,575	25
30		4,875	4,975	4,750	4,475	30
35			4,100	4,000	3,725	35
40			3,100	3,325	3,100	40
45				2,775	2,600	45
50				2,200	2,250	50
55					1,900	55
60					1,450	60

With Jib, Retracted and Extended



Standard ASME B30.5

 ft	Jib Capacities for All Boom Lengths										 ft
	35° lb	40° lb	45° lb	50° lb	55° lb	60° lb	65° lb	70° lb	75° lb	80° lb	
24	700	825	1,000	1,150	1,340	1,600	1,900	2,300	3,100	4,160	24
40	520	580	650	730	810	930	1,080	1,400	1,810	2,260	40

Notes to lifting capacity

Lifting capacities do not exceed 85% of tipping load. Weight of hook blocks and slings is part of the load, and is to be deducted from the capacity ratings. Consult operation manual for further details.

Note: Data published herein is intended as a guide only and shall not be construed to warrant applicability for lifting purposes. Crane operation is subject to the computer charts and operation manual both supplied with the crane.

